

Quick Start Guide

System Requirements

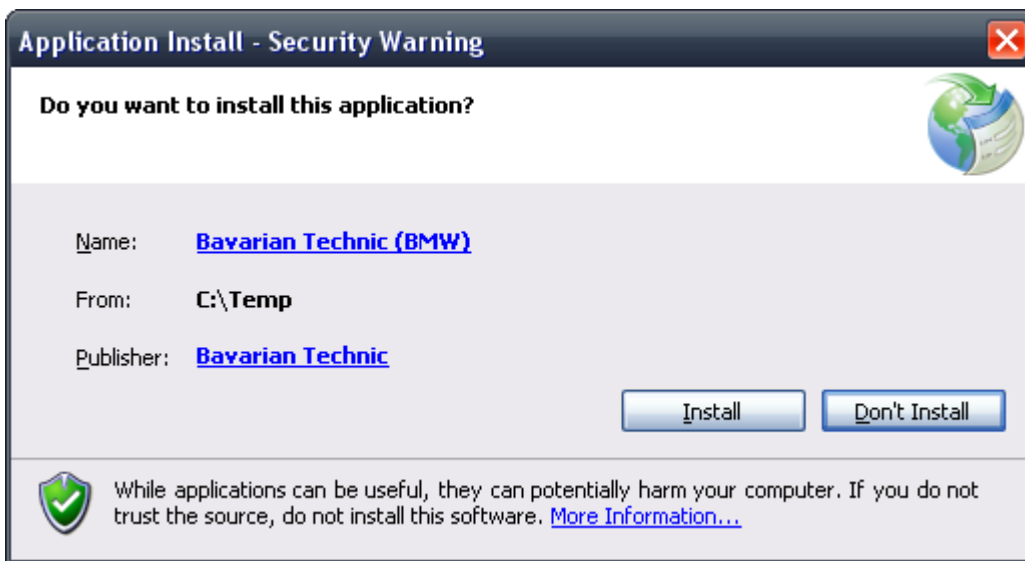
- Windows® 2000, XP (32- or 64-bit), or Vista (32- or 64-bit)
- 1.2 GHz Pentium-class processor or faster (2.0 GHz or faster recommended for late-model cars.)
- 512 MB RAM
- Microsoft .NET Framework 2.0 (free download from Microsoft)
- Internet Explorer version 6.0 or higher
- Available USB port

Installing the Software

Bavarian Technic does not distribute a software CD with the cables. Install the software from the internet before connecting the cable.

To install Bavarian Technic:

1. Go to <http://www.bavariantechnic.com>.
2. Select *Downloads* from the left column.
3. Install *Bavarian Technic USB cable drivers*.
4. Install *Microsoft® .NET framework version 2.0*.
5. Click *Download Bavarian Technic now...* to start the Bavarian Technic installation.
6. Click the *Install* button when prompted with the security warning (shown below).



When the installation is complete, the software will start automatically. To open the software after installation, click on *Start | All Programs | Bavarian Technic | Bavarian Technic (BMW)*.

Using the Bavarian Technic Tool

Upon successful installation of the software, you are ready to connect the cables and launch the software.

Connecting the Cables

Depending upon the kit you ordered, you will have one, two, or three cables. With the car's ignition off and before launching the software, connect the cables between your computer and car as follows:

- Connect the standard interface cable's USB connector to the USB port on your computer.
- Connect the OBDII-end of the standard interface cable to the diagnostic port on your car.
- If you purchased the 50' extension cable, you can connect it between the male OBDII-end of the standard interface cable and the car.
- If you are working on early-model cars and have the early-model adapter cable, connect it between the standard interface cable and car or between the 50' extension cable and the car.

After the cables are connected, turn the ignition to the 'on' position and launch the Bavarian Technic.

Launching the Software

Once you have the cables connected, you can launch the software. There are two ways to do this:

- Click *Start | All Programs | Bavarian Technic | Bavarian Technic (BMW)*.
- Go to <http://www.bavariantechnic.com/download.aspx> and re-download the software.

When the software starts, you can choose a vehicle by year and model, or choose specific control modules from the list of all available supported control modules. When you select a vehicle, you can select modules for that vehicle in the left-hand navigation pane.

